



Example:
5 filling cycles
(≥4 remaining reservoir discharges)

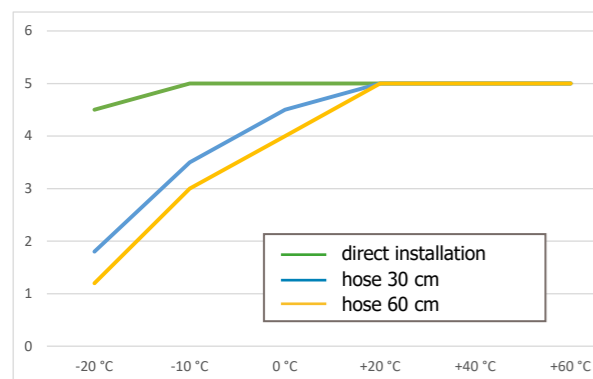
5. Status reports

LED	Status	Cause	Troubleshooting
green	lights	device is currently lubricating	
	flashes every 60 s	function control (=ok), device is activated	
red	flashes 2x shortly every 10 s	backpressure is too high	Unscrew device, switch it off and on again: Pump is running → check lube point for too high backpressure → solve problem → screw device back in Device does not work → replace device
	flashes every 10 s	max. number of cycles is reached low battery	replace device

6. Emptying

6.1 Emptying when using Gruetzner multipurpose grease

Reference values for maximal number of discharges at backpressure-less lube point:



Temp.	max. number of discharges		
	direct	with hose: Ø 8x6x1 mm	
		length 30 cm	length 60 cm
+60 °C	5	5	5
+40 °C	5	5	5

6

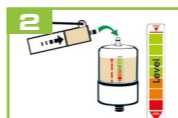
+20 °C	5	5	5
0 °C	5	4.5	4
-10 °C	5	3.5	3
-20 °C	4.5	1.8	1.2

The number of possible discharges may vary depending on the backpressure of the lube point and the temperature. Therefore, regularly check the correct function of the lubricator.

7. Filling

Pay attention to utmost cleanness when refilling the reservoir. Use a standard hand-lever grease gun to fill the lubricator:

- Remove activation cap (fig. 1)
- Put filling coupling straight onto filling nipple
- Slowly fill reservoir up to the marking "max." (fig. 2)
- Disconnect filling coupling and clean filling nipple
- Put on activation cap again

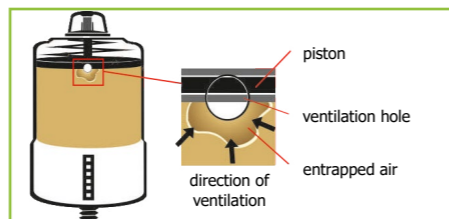


NOTE Please never remove the filling nipple!

7.1 Initial filling

With the initial filling air might get entrapped in the reservoir. These air inclusions do not affect the function of the pump, but they are transported to the lubrication point and the lubrication may possibly be delayed or interrupted.

To drain the air, fill the lubricator during initial filling slowly **up to approx. 1 mm above the marking „max.“** until the sealing lip of the piston slightly opens the ventilation hole. Then, the air escapes at the overflow hole.



The delivered quantity of lubricant varies depending on the selected month setting.

Month setting	lubricant quantity/month		lubricant quantity/week	
	LUB5-120	LUB5-250	LUB5-120	LUB5-250
24	5.0 ml	10.4 ml	1.2 ml	2.4 ml
12	10.0 ml	20.8 ml	2.3 ml	4.9 ml
6	20.0 ml	41.7 ml	4.7 ml	9.7 ml

7

3	40.0 ml	83.3 ml	9.3 ml	19.4 ml
1	120.0 ml	250.0 ml	28.0 ml	58.3 ml

7.2 Refilling

Do not refill the lubricator before it is completely empty. This prevents malfunction due to cured lubricant (oil separation).

Promptly refill the lubricator as soon as it is completely empty. Complete discharging does not damage the pump, but air is transported to the lubrication point. The lubrication point might be lubricated insufficiently and you have to ventilate the lubrication lines again after refilling.

8. Important information

- Minimize tube resistances. Narrow passages and right angles should be avoided. Connection lines must not be longer than 2 m (grease) or 5 m (oil).
- The device can be re-adjusted or switched off during operation.
- During operation a visual inspection of the device as well as of the lubrication point must be carried out regularly.
- The device may only be used to supply a single lubrication point. No branches may be made. Once the lubricator is installed and activated it must not be removed and mounted onto another lubrication point.
- The product guarantee is 2 years.
- Product warranty is limited to original defects in material and workmanship and does not cover any collateral damage due to mishandling, abuse and/or any other inappropriate use of the device.
- Only use original accessories.
- The maximum storage temperature should not exceed +40 °C (+104 °F). Higher temperatures decrease the battery's lifespan. The lubricator has to be activated within two years from receiving.

WARNING

- Potential electrostatic charging hazard. Clean with damp cloth only.
- Do not change, replace or charge battery cells.
- Do not open or disassemble the lubricator.

Revision: 1 / 10.09.2021

Gruetzner GmbH
Dagobertstr. 15 • 90431 Nuremberg, Germany
tel. +49 911 277 399 0
info@G-LUBE.com • www.G-LUBE.com

8

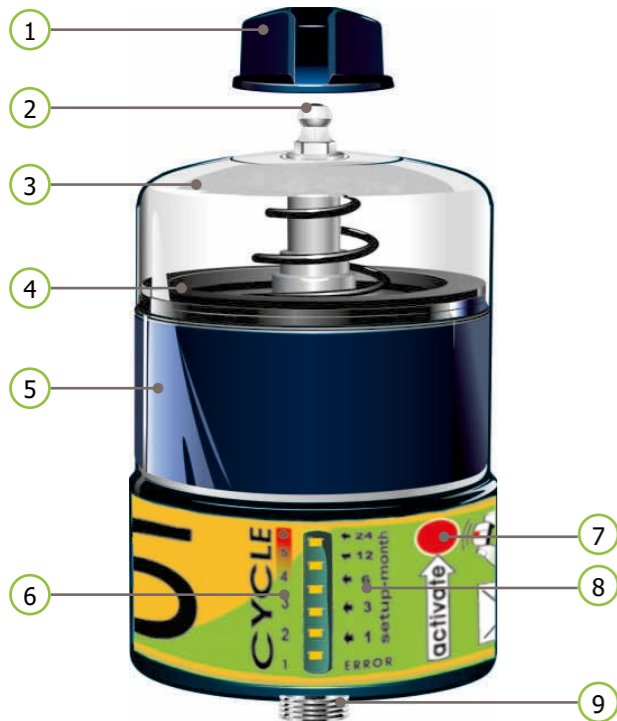
LUB5

User manual



GRUETZNER
AUTOMATIC LUBRICATION

1. Product details



No.	Description	No.	Description
1	Activation magnet	6	Remaining filling cycles
2	Filling nipple	7	Activation zone
3	Housing	8	Run-time
4	Piston	9	Outlet thread 1/4"
5	Lubricant		

2. Technical data

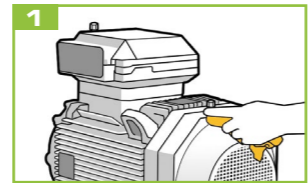
Housing		
Operating temperature	-20 ... +60*	°C
Dimensions (height x Ø)	LUB5-120: 127 x 70 LUB5-120 PLUS: 182 x 70 LUB5-250: 243 x 70	mm
Filling nipple	DIN 71412	
Lubricant and hydraulic		
Lubricating medium	oils: ISO VG = 32 - 680 mm ² /s greases up to NLGI cl. 2	
Lubricant volume	120/250	ml
Max. number of discharges	5**	
Number of lubrication points	1	
Max. operating pressure	10	bar

Grease delivery	per stroke	0.24	ml
Distribution period		1/3/6/12/24 months	
Electrics			
Working voltage		3.0	V
Protection class		IP65	

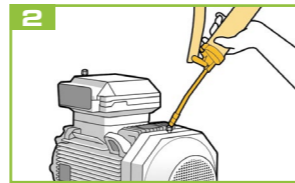
* The stated value is down to the individual application and may extensively differ in some cases (depending on the lubricant and further conditions).

** 5 discharges or an operational period of 48 months (whichever comes first)

3. Installation



Remove any contaminants around the lube point.



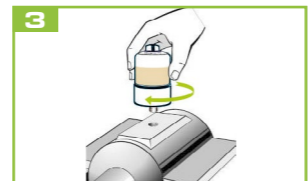
Ensure a clear passage using a manual grease gun.

NOTE The reliable operation depends on completely filled grease lines. Ensure that the grease lines are not blocked. Therefore, grease them before starting the device. Remove any hardened grease by purging the lube point with a manual grease gun.

The grease in the equipment and the grease in the unit should be the same or compatible.



Remove the grease nipple and install proper connectors.



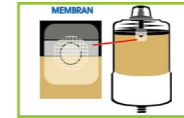
Screw the lubricant dispenser to the lubrication point.

Direct mounting is always preferred. If the application does not allow direct mounting, remotely assemble the unit using appropriate accessories and keep the distance from the lube point as short as possible. For **remote installations** use a 8 mm (outer diameter) tube pre-filled with the same or compatible grease as the grease contained in the unit.

Outdoor use

If the lubricator is used outdoors, a membrane sticker should be applied onto the ventilation hole.

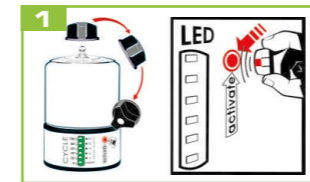
- Fill and ventilate the lubricator (→chap. 7)
- Clean the surface around the ventilation hole and remove residual lubricant if necessary
- Attach membrane sticker (see picture)



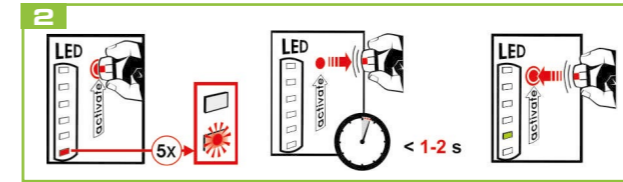
4. Operation and settings

The activation cap is the key component of the lubricator. Use the activation cap to set important functions such as power on and off or adjusting the operation time.

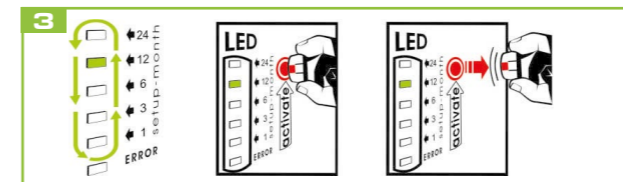
4.1 switching on and adjusting the operation time



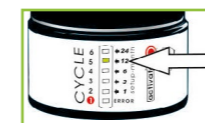
Remove activation cap and guide it to the red point above the activation zone.



Place cap on the red point and wait until the red LED has flashed 5 times. Remove cap for 1-2 s and then immediately place it back on the red point.

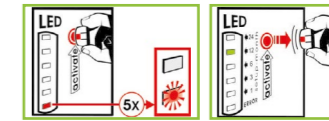


The green LEDs are now flashing one after another. Remove the activation cap when the required month setting is flashing. The pump is adjusted and starts lubricating immediately.



Example:
12 months set

4.2 Switching off and changing the setting

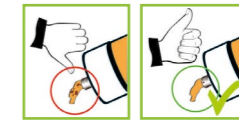


Place the activation cap on the red point and wait until the red LED has flashed 5 times. Then remove the cap. The pump is turned off. The red LED glows for 5 seconds. After switching on the pump again, the setting can be changed.

4.3 Activation of special lubrication

Activate the special lubrication to:

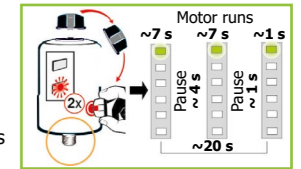
- ventilate the lubricator (e.g. before filling the empty lubricator)
- perform an intermediate lubrication
- check the remaining capacity of the pump (→chap. 4.4)



Initiate special lubrication at least 5 times after initial filling until the lubricant exits nearly bubble-free.

Make sure to switch on the lubricator before starting a special lubrication.

- Remove activation cap and guide it to the red point above the activation zone.
- Place cap on the red point and wait until the red LED has flashed twice. Then remove cap.
- The green LED of the selected month cycle flashes.
- The pump starts a special lubrication (app. 20 s):
 - motor runs (app. 7 s)
 - motor stops (app. 4 s)
 - motor runs (app. 7 s)
 - motor stops (app. 1 s)
 - motor runs (app. 1 s)
- The special lubrication is finished.



4.4 Capacity check

The remaining capacity of the lubricator is indicated on the LED display after each normal lubrication cycle. To check the remaining capacity explicitly, activate a special lubrication (→chap. 4.3).

Display	Remaining capacity		Remaining reservoir discharges
	LUB5-120	LUB5-250	
6	≥ 600 ml	≥ 1250 ml	≥ 5
5	≥ 481 ml	≥ 1001 ml	≥ 4
4	≥ 361 ml	≥ 751 ml	≥ 3
3	≥ 241 ml	≥ 501 ml	≥ 2
2	≥ 121 ml	≥ 251 ml	≥ 1
1	≤ 120 ml	≤ 250 ml	0