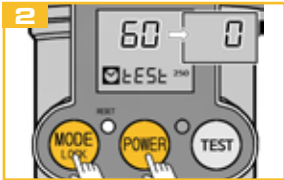


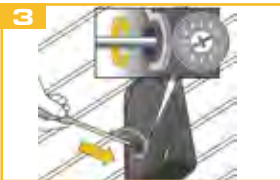
5. Calibrate vibration sensor



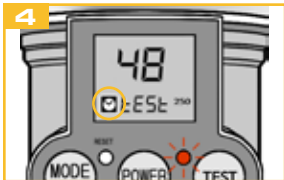
Open the protective cap on the vibration sensor.



Hold POWER pressed down and press MODE in order to start the vibration recognition mode. This takes 60 seconds.



Use a screwdriver to set the wheel to 0 (10=factory setting/highest sensitivity).



Turn the wheel slowly in a clockwise direction until the clock symbol flashes and the red LED flickers.

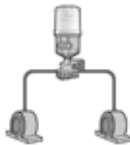
Repeat the above steps as necessary in order to ensure that the vibration is recognised correctly. If you were not able to set the correct sensitivity then please move the vibration sensor.

LCD display when synchronisation is correct	
	The device is ready for operation
	The device is in idle mode (no vibration was detected)

**NOTE** The recognition interval for the vibration sensor during operation depends on the set lubricant capacity.  
**60/125 ml: Interval length 15 minutes**  
**250 ml: Interval length 30 minutes**

6. Mounting

**Direct mounting** is always preferred.  
If the application does not allow direct mounting, remotely assemble the unit using appropriate accessories and keep the distance from the lube point as short as possible.  
For **remote installations** use a 6 mm (outer diameter) tube pre-filled with the same or compatible grease as the grease contained in the unit.



**Multiple point installation** is possible using a progressive distributor. Do not block any connections to the progressive distributor. Instead use a suitable distributor in accordance with the number of lubrication points. Keep the distance between the distributor and the lubrication unit as short as possible.

7. Important information

- The lubricant dispenser is **not** suitable for use with oil.
- Minimize tube resistances. Narrow passages and right angles should be avoided.
- The cable on the vibration sensor may not touch the vibrating machine.
- During operation of the device a visual inspection of the device as well as of the lubrication point must be carried out regularly. The calibration of the sensor must be repeated at periodic maintenance checks in order to ensure that the vibration is correctly recognised.
- Product warranty is limited to original defects in material and workmanship and does not cover any collateral damage due to mishandling, abuse and/or any other inappropriate use of the device.
- The maximum storage temperature should not exceed +40 °C (+104 °F). Higher temperatures decrease the battery's lifespan. The lubricator has to be activated within two years from receiving.
- If the LCD displays **LP** after 2 years from the installation date (1.5 years for 250 ml) please replace the battery and the cartridge immediately. Dosing errors can occur after using the device for too long because of grease hardening or a reduction in battery charge.



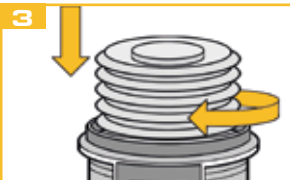
8. Changing the cartridge



Screw off the top section and the empty cartridge. Change the battery and secure it with the clip.



Press the cartridge lightly so that some lubricant escapes.



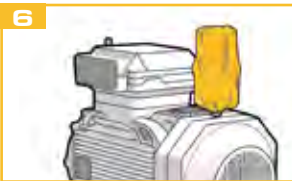
Screw in the cartridge without overtightening it.



Mount the top section until it clicks.



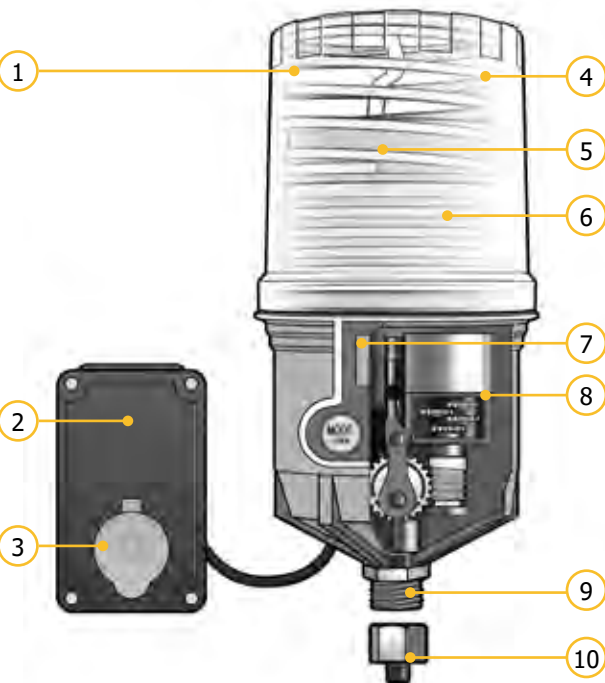
Attach the included sticker to the drive unit and write the installation date and expiry date on it.



Pull the dust protection cover over the lubricant dispenser where necessary.



1. Product details



No.	Description	No.	Description
1	Housing	6	Lubricant cartridge
2	Vibration sensor	7	Display
3	Plug	8	Drive
4	Pressure spring	9	Thread male 3/8"
5	Piston	10	Reducer 3/8" x 1/4"

2. Technical data

Housing				
Operating temperature		Alkaline battery: Lithium battery:	+5 ... +60 -15 ... +60	°C
Dimensions (height x Ø)		60/125 ml: 182 x 91 / 250 ml: 208 x 91		mm
Lubricant and hydraulic				
Lubricating medium		greases up to NLGI class 2		
Lubricant volume		60/125/250		ml
Number of lubrication points		up to 4 by using splitters* up to 10 by using progressive distributors*		
Max. operating pressure		60		bar
Grease delivery	per stroke	0.33		cm³
Distribution period		1-12 months		

Electrics		
Working voltage	4.5	V
Protection class	IP54	

\* The stated value is down to the individual application and may extensively differ in some cases (depending on the lubricant and further conditions).

3. LCD & key assignment

Key assignment	
MODE LOCK	Dispensing time setting Unlock device (press down for 2 seconds)
POWER	Switch device on and off (keep pressed)
POWER + MODE LOCK	Vibration recognition mode (keep power button pressed, then press MODE)
TEST	Select/modify the lubricating capacity Test mode (ON: press for 2 seconds, OFF: press briefly)
RESET	Restore default settings (in the event of malfunction or to change cartridge)

LCD display	
	Dispensing time set
60 / 125 / 250	Cartridge capacity
	Device locked
	Test mode
	Number of days remaining until end of dispensing time
	Number of days since end of dispensing time
	Number of days when no lubrication was carried out
	Maximum run-time reached
	Overpressure / operation paused
	Low battery power



	Cartridge empty
	Flashing LED when battery power is low, overpressure or empty cartridge

4. Installation

**NOTE** The reliable operation depends on completely filled grease lines. Ensure that the grease lines are not blocked. Therefore, grease them before starting the device. Remove any hardened grease by purging the lube point with a manual grease gun.

**NOTE** The grease in the equipment and the grease in the unit should be the same or compatible.