

6. Status reports

Checking the lubricator's function is easy:

LED green (every 15 sec.) = everything alright
LED red (every 5 sec.) = fault indication

When the red LED flashes every 5 seconds, a fault occurred. Possible errors or faults are:

Lubricant cartridge is empty

Please replace the empty lubricant cartridge with an original cartridge. **In the case of battery operation, the battery must also be replaced with each cartridge.** Before changing the cartridge, please turn the spindle back into its original position by hand and then follow the instructions on page 4 →Position the pressure plate.

Back pressure too high

The drive unit stops when the pressure increases to more than 7.5 bar. Cause: The lubricating point could be blocked, the hose is too long and/or the grease is too stiff.

Battery voltage too low

Please replace the battery. Only use original batteries. Change them with each new lubricant cartridge!

7. 24 V adapter



In addition to classic battery operation, the lubricant dispenser is also available with external 24V power supply. Lubricators which are already in use can be retrofitted anytime.

NOTES

- When connecting this unit to AC/DC power, please make sure that the power supply meets the technical requirements of this product.
- After switching to the adapter, the lubricator will no longer comply with the UL explosion-proof certification specifications.
- If any subsequent changes are made to the runtime setting, the power supply must always be disconnected for at least 15 seconds **before** changing the DIP positions.

Technical data of adapter

Input	24	V
Output	5.7	V
Power output	12	W
IP rating	IP 65	
Cable length	1	m

Installation of adapter

- Unscrew cap
- Attach 24 V adapter
- Screw on 24 V adapter
- Attach dust cover
- Connect the connection cable



8. Important information

- Minimize tube resistances. Narrow passages and right angles should be avoided. Connection lines must not be longer than 1.5 m (grease) or 5 m (oil).
- The device can be re-adjusted or switched off during operation.
- During operation of the device a visual inspection of the device as well as of the lubrication point must be carried out regularly.
- The device may only be used to supply a **single** lubrication point. No branches may be made. Once the lubricator is installed and activated it must not be removed and mounted onto another lubrication point.
- In the case of battery operation, the battery must also be replaced with each cartridge.
- The product guarantee is 2 years for the drive unit and 1 year for lubricant cartridges.
- Product warranty is limited to original defects in material and workmanship and does not cover any collateral damage due to mishandling, abuse and/or any other inappropriate use of the device.
- Only use original accessories and batteries.
- The maximum storage temperature should not exceed +40 °C (+104 °F). Higher temperatures decrease the battery's lifespan. The lubricator has to be activated within two years from receiving.

Revision: 0 / 13.08.2021
 Sololube Generation II



9. Dispensing setting

Model	Lubricant volume (ml)	Grease delivery/stroke (ml)
Xtra60	60	0.167
Xtra150	150	0.417
Xtra250	250	0.694

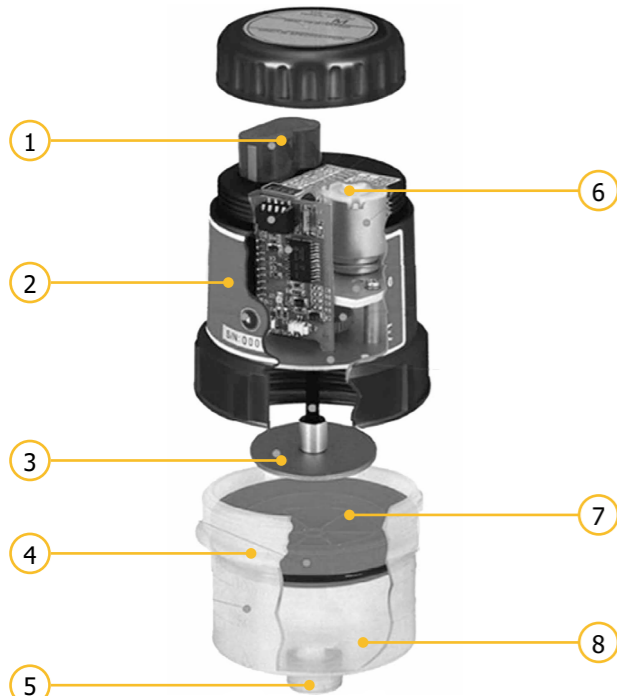
Distribution period (months)	DIP switch position	Dispensing cycle (hours)	Lubricant/day (ml)			Lubricant/month (ml)		
			Xtra60	Xtra150	Xtra250	Xtra60	Xtra150	Xtra250
1	1	2	2.00	5.00	8.33	60.00	150.00	250.00
2	2	4	1.00	2.50	4.17	30.00	75.00	125.00
3	1+2	6	0.67	1.67	2.78	20.00	50.00	83.33
4	4	8	0.50	1.25	2.08	15.00	37.50	62.50
5	1+4	10	0.40	1.00	1.67	12.00	30.00	50.00
6	2+4	12	0.33	0.83	1.39	10.00	25.00	41.67
7	1+2+4	14	0.29	0.71	1.19	8.57	21.43	35.71
8	8	16	0.25	0.63	1.04	7.50	18.75	31.25
9	1+8	18	0.22	0.56	0.93	6.67	16.67	27.78
10	2+8	20	0.20	0.50	0.83	6.00	15.00	25.00
11	1+2+8	22	0.18	0.45	0.76	5.45	13.64	22.73
12	4+8	24	0.17	0.42	0.69	5.00	12.50	20.83

SOLO LUBE

User manual
 60, 150, 250 ml



1. Product details



No.	Description	No.	Description
1	Battery	5	Thread 1/2"
2	Drive	6	Dispensing setting
3	Pressure plate	7	Piston
4	Cartridge	8	Lubricant

The lubricator consists of a drive unit, a lubricant cartridge, a transparent protective cover, a reducer (1/2" → 1/4") and - depending on the model - a 24 V adapter for external power supply. Before starting the installation, please check that all parts are included in the scope of delivery.

2. Technical data

Housing		
Operating temperature	-20 ... +60*	°C
Dimensions (height x Ø)	60 ml: 140 x 89 • 150 ml: 166 x 89 • 250 ml: 196 x 103	mm
Lubricant and hydraulic		
Lubricating medium	oils and greases up to NLGI class 2	
Lubricant volume	60 • 150 • 250	ml
Number of lubrication points	1	

Max. operating pressure	7.5	bar
Grease delivery	per stroke	60 ml: 0.164 • 150 ml: 0.417 • 250 ml: 0.694
Distribution period	1-12 months	
Electrics		
Working voltage	6.0 (Li battery) oder 24 (adapter)	V

* The stated value is down to the individual application and may extensively differ in some cases (depending on the lubricant and further conditions).

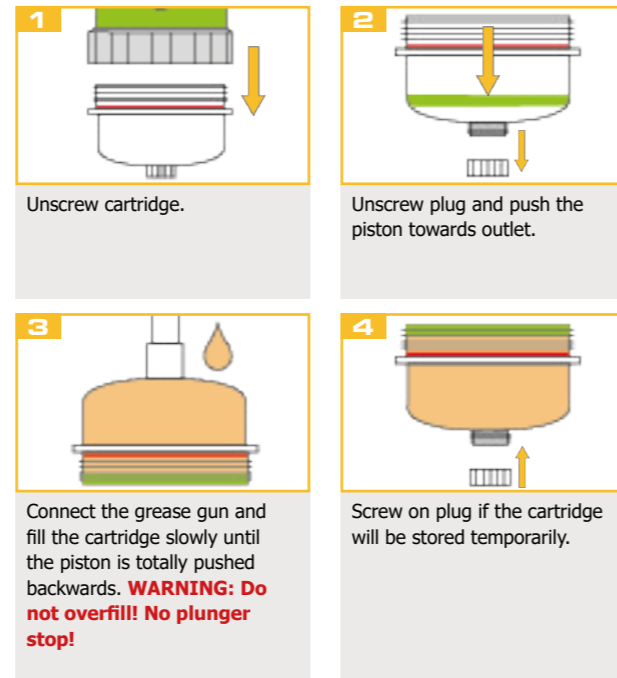
3. Filling

If you decide to fill the lubricant cartridge yourself, please follow the instructions given below before starting the installation. Please only use lubricants that have been tested and approved by the manufacturer.

NOTE The reliable operation depends on completely filled grease lines. Ensure that the grease lines are not blocked. Therefore, grease them before starting the device. Remove any hardened grease by purging the lube point with a manual grease gun.

The grease in the equipment and the grease in the unit should be the same or compatible.

Filling with grease



Connect the grease gun and fill the cartridge slowly until the piston is totally pushed backwards. **WARNING: Do not overfill! No plunger stop!**

Screw on plug if the cartridge will be stored temporarily.

NOTE You can also use a hand lever press. Therefore we recommend our refill nipple SAT3012. An ideal result is achieved if you rotate the cartridge while it is being filled.

Filling with oil

- Unscrew cartridge
 - Unscrew plug
 - Carefully push the piston towards the edge of the cartridge.
- WARNING: No plunger stop!**

- Fill in oil

NOTE Filled cartridges have to be equipped with back pressure valve SAT2021.

4. Starting

Position the pressure plate

The pressure plate of the lubricating unit must be placed in the correct position before starting.

- Carefully turn the pressure plate clockwise until you notice a slight resistance.
- Screw together drive and filled cartridge (without plug) until the piston touches the pressure plate. Ensure that both parts are securely connected.

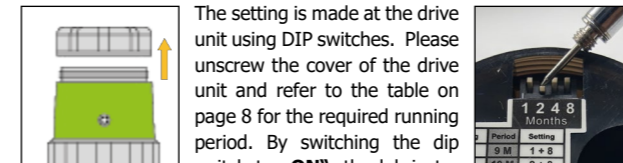
If done properly, a small quantity of lubricant should emerge from the outlet. Then the unit is ready for use.

IMPORTANT

If the pressure plate does not touch the piston when cartridge and drive unit are screwed together, no lubricant will be pumped.

Dispensing setting

The battery-powered lubricator can operate for up to one year (1-12 months). In discontinuous operation of the application (external power supply), longer delivery times are possible.



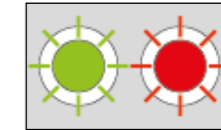
The setting is made at the drive unit using DIP switches. Please unscrew the cover of the drive unit and refer to the table on page 8 for the required running period. By switching the dip switch to „ON“, the lubricator is set for the relevant running period and is ready to start.

IMPORTANT

Please switch the DIP switch BEFORE inserting the battery or screwing on the adapter.

If any subsequent changes are made to the runtime setting, the power supply must always be disconnected for at least 15 seconds before changing the DIP positions.

After switching the DIP switches, insert the battery in the battery compartment provided and screw the cover back onto the drive unit. If the 24 VDC adapter is used, screw the adapter instead of the cover onto the drive unit. Pull the transparent protective cover over the drive unit of the lubricating unit to protect it from dust, dirt and moisture.



The lubricator provides a red and a green LED. When the power is supplied, the lubricator responds as follows:

The green LED flashes 5 times and the drive performs an automatic test run (one turn, green LED flashes quickly while the motor is running).

The lubricator then switches to operating mode and operates according to the setting made.

In operating mode, the green LED flashes briefly every 15 seconds (= everything alright). The red LED only flashes if errors or faults occur (→status reports).

5. Tests

Apart from the dispensing settings, the lubricator also allows other DIP switch positions. It is not absolutely necessary to perform the additional tests to guarantee the lubricator's correct functioning.

BACK:

Switch position 1+4+8 allow the pressure plate to return automatically.

Alternatively, the spindle can also be wound back by hand.

TEST1:

In switch position 2+4+8 the pressure plate turns a half-turn clockwise (green LED flashes) and anticlockwise (red LED flashes). Afterwards the test run ends and the green LED lights up.

TEST2:

If you switch DIP switches 1+2+4+8, the lubricator starts a test run.

WARNING: This test function is performed continuously until the power supply is disconnected. If the test run is not interrupted, the lubricator will completely empty the lubricant cartridge!