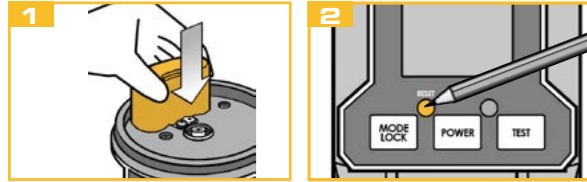


## 5. Changing the cartridge



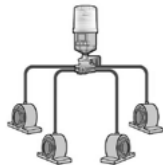
Screw off the top section and the empty cartridge. Replace the battery every time you change the cartridge.

After changing the cartridge, reset the device by pressing the RESET button and then set the dispensing time again.

## 6. Mounting

**Direct mounting** is always preferred.

If the application does not allow direct mounting, remotely assemble the unit using appropriate accessories and keep the distance from the lube point as short as possible (5 metres maximum). For **remote installations** use a 4 mm (inner diameter) tube pre-filled with the same or compatible grease as the grease contained in the unit.

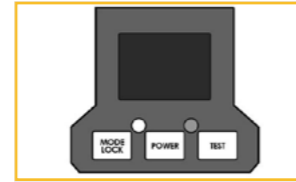


**Multiple point installation** is possible using a progressive distributor. Do not block any connections to the progressive distributor. Instead use a suitable distributor in accordance with the number of lubrication points. Keep the distance between the distributor and the lubrication unit as short as possible.

## 7. Important information

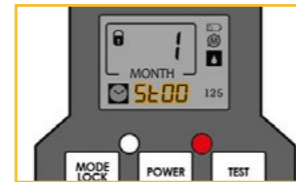
- The lubricant dispenser is **not** suitable for use with oil.
- Minimize tube resistances. Narrow passages and right angles should be avoided.
- During operation of the device a visual inspection of the device as well as of the lubrication point must be carried out regularly.
- Product warranty is limited to original defects in material and workmanship and does not cover any collateral damage due to mishandling, abuse and/or any other inappropriate use of the device.
- The maximum storage temperature should not exceed +40 °C (+104 °F). Higher temperatures decrease the battery's lifespan. Batteries may be stored for max. 1 year. The lubricator has to be activated within two years from receiving.

## 8. Troubleshooting



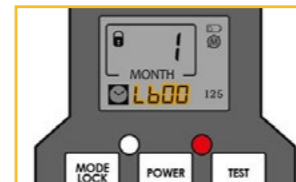
**Error:**  
Blank LCD screen  
**Cause:**  
Electrical malfunction of the CPU or the circuit, battery problem

**Remedy:**  
Replace battery and/or press RESET button to restart the lubricator. If the problem persists, contact your supplier.



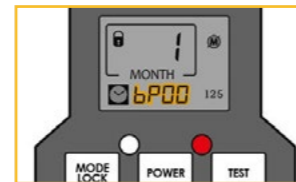
**Message:**  
Dispensing time expired (Stop)  
Also displayed: [Low Battery Icon] + [Battery Icon]  
**Cause:**  
The set dispensing time has expired.

**Remedy:**  
Change the cartridge and the battery and reset the dispensing time (see „5. Changing the cartridge“).



**Error:**  
Low battery  
**Cause:**  
Voltage drop of the battery due to improper storage or demanding operating conditions (temperature, humidity or back pressure).

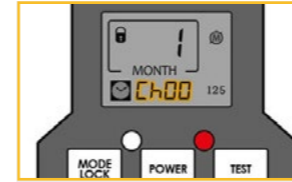
**Remedy:**  
Always store the batteries in a cool, dry place and only use original batteries. Lithium batteries are also available as an option for demanding applications.



**Error:**  
Backpressure  
**Cause:**  
Excessive back pressure due to over-lubrication, interrupted, blocked or too long lubrication lines, etc.

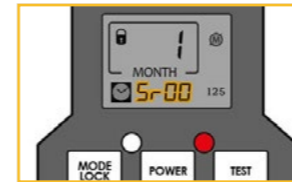
**Remedy:**

- Check the back pressure at the lubrication point and/or at the lubrication line,
- if necessary, reduce the running time setting,
- if necessary, reduce the length of the lubrication line, or check the lubrication lines for possible blockages.



**Error:**  
Motor is not responding (Check)  
**Cause:**  
The electric motor may not be activated due to an electrical problem.

**Remedy:**  
Contact your supplier.



**Error:**  
Operation in standby due to non-detection of the motor sensor (Sensor)  
**Cause:**  
Problem with the motor sensor

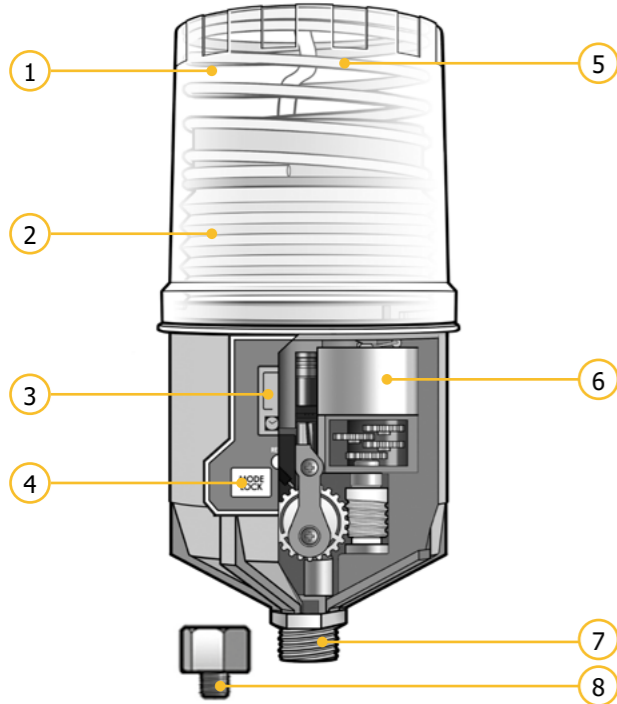
**Remedy:**  
Contact your supplier.

# G LUBE EM B

## User manual GL-EM-B



## 1. Product details



No.	Description	No.	Description
1	Housing	5	Pressure spring
2	Lubricant cartridge	6	Drive
3	Display	7	Thread male 3/8"
4	Dispensing setting	8	Reducer 3/8" x 1/4"

## 2. Technical data

Housing			
Operating temperature	Alkaline battery: +5 ... +60* Lithium battery: -15 ... +60*	°C	
Dimensions (height x Ø)	60/125 ml: 181 x 91, 250 ml: 209 x 91, 500 ml: 260 x 92	mm	
Lubricant and hydraulic			
Lubricating medium	greases up to NLGI class 2		
Lubricant volume	60/125/250/500	ml	
Number of lubrication points	up to 12 (with progressive distributors)		
Max. operating pressure	60	bar	
Grease delivery per stroke	0.34	ml	
Distribution period	1-12 months		

Electrics		
Working voltage (DC)	4,5	V
Protection class	IP65	

\* The stated value is down to the individual application and may extensively differ in some cases (depending on the lubricant and further conditions).

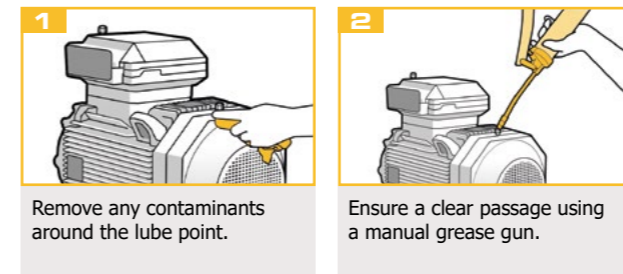
## 3. LCD & key assignment

Key assignment	
	Dispensing time setting (1-12 months) Press and hold for quick selection Unlock device (press down for 2 seconds)
	Switch device on and off (press down for 2 seconds)
	Test mode (ON: press for 2 seconds, OFF: press briefly, stops after the end of the current lubrication cycle)
	Reset to default setting when the unit is switched on or off (in the event of a malfunction or after refilling).
	Backlight ON (briefly press the MODE and TEST buttons simultaneously)

LCD-display	
	Dispensing time set
	Device locked
	Low battery power
	Overpressure / operation stopped
	Cartridge empty
60/125 250/500	Cartridge capacity
- 180	Number of days remaining until end of dispensing time
CH03	In case of motor error: Number of days since operation was stopped
5r00	In case of sensor error: Number of days since operation was stopped
bP00	In case of overpressure: Number of days since operation was stopped
PUG6	Test mode (remaining number of cycles is displayed as PUG0 to PUG6. 2 sec. pause between cycles).
5t03	Number of days since end of dispensing time Also shown:  +

	Red LED flashes in case of errors, low battery, overpressure or after the dispensing time has ended
	Green LED flashes during normal operation

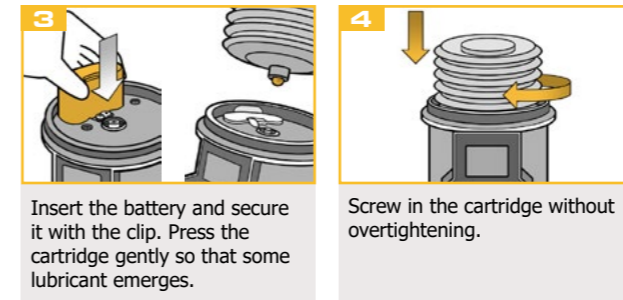
## 4. Installation



**NOTE** .The reliable operation depends on completely filled grease lines. Ensure that the grease lines are not blocked. Therefore, grease them before starting the device. Remove any hardened grease by purging the lube point with a manual grease gun. The grease in the equipment and the grease in the unit should be the same or compatible.

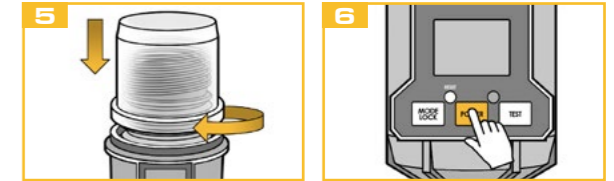


**NOTE** Remove the grease nipple and install proper connectors.



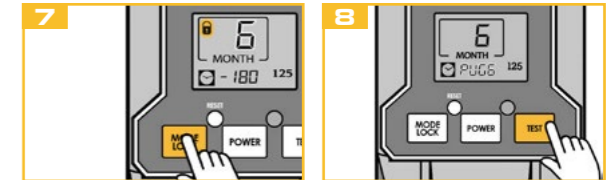
Insert the battery and secure it with the clip. Press the cartridge gently so that some lubricant emerges.

Screw in the cartridge without overtightening.



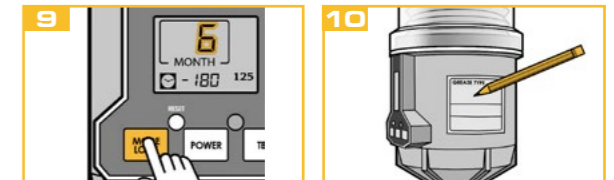
Screw the top section onto the drive unit. The top section locks into place with an audible click.

Press POWER for 2 seconds to switch on.



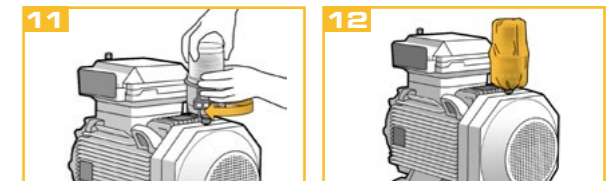
The key lock is activated after 8 seconds. Press the LOCK button for 2 seconds to unlock the device.

OPTIONAL: Press the TEST button for 2 seconds to perform a test run. Grease will escape during the test run.



Press the MODE button several times to set the desired dispensing time.

Attach the included sticker to the drive unit and write the installation date and expiry date on it.



Fix the lubricator in the desired position.

Pull the dust protection cover over the lubricator where necessary.