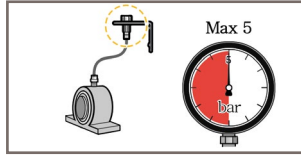
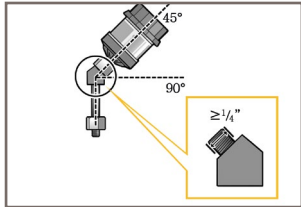


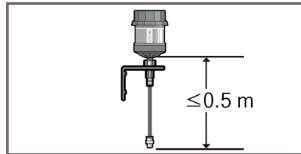
3. Mounting



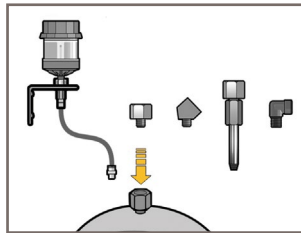
High backpressure can cause a delay in dispensing. The backpressure shall not exceed 5 bar (73 psi).



If the product is installed at a 45° or 90° angle, please use an angle adapter greater than or equal to 1/4" (diameter 6-8 mm).



Use a 6 mm (inner diameter) tube for remote installations. Keep the maximum distance at 0.5 m (1.5 feet).



The device is designed for **single point lubrication only**. Direct mounting is always preferred. If the application does not allow direct mounting, remotely assemble the unit using appropriate accessories and keep the distance from the lube point as short as possible.

For remote installations use a 6 mm (inner diameter) tube pre-filled with the same or compatible grease as the grease contained in the unit.

4. Important information

- Minimize tube resistances. Narrow passages and right angles should be avoided.
- The device can be re-adjusted or switched off during operation.
- During operation of the device a visual inspection of the device as well as of the lubrication point must be carried out regularly.
- The device may only be used to supply a single lubrication point. No branches may be made. Once the lubricator is installed and activated it must not be removed and mounted onto another lubrication point.
- Product warranty is limited to original defects in material and workmanship and does not cover any collateral damage due to mishandling, abuse and/or any other inappropriate use of the device.

- The maximum storage temperature should not exceed +40 °C (+104 °F). Higher temperatures decrease the battery's lifespan. Batteries may be stored for max. 1 year. The lubricator has to be activated within two years from receiving.

5. Dispensing volume chart

The output volume may vary due to unsettled outside influences such as ambient temperature, atmospheric pressure, consistency of lubricant or tube lengths.

Dispensing period	Dispensing volume/day		
	60 ml	120 ml	240 ml
1 month	2.00 ml	4.00 ml	8.00 ml
3 months	0.67 ml	1.33 ml	2.66 ml
6 months	0.33 ml	0.67 ml	1.33 ml
9 months	0.22 ml	0.44 ml	0.89 ml
12 months	0.17 ml	0.33 ml	0.67 ml

6. Product certifications

ATEX



II 1 G Ex ia IIC T4 Ga
INERIS 12ATEX0062X
-20°C ≤ Ta ≤ +55°C

IP68

CE 0344

EN Standards:

EN IEC 60079-0:2018; EN 60079-11:2012

Revision: 3 / 25.06.2021



G | LUBE

User manual
60, 120, 240 ml



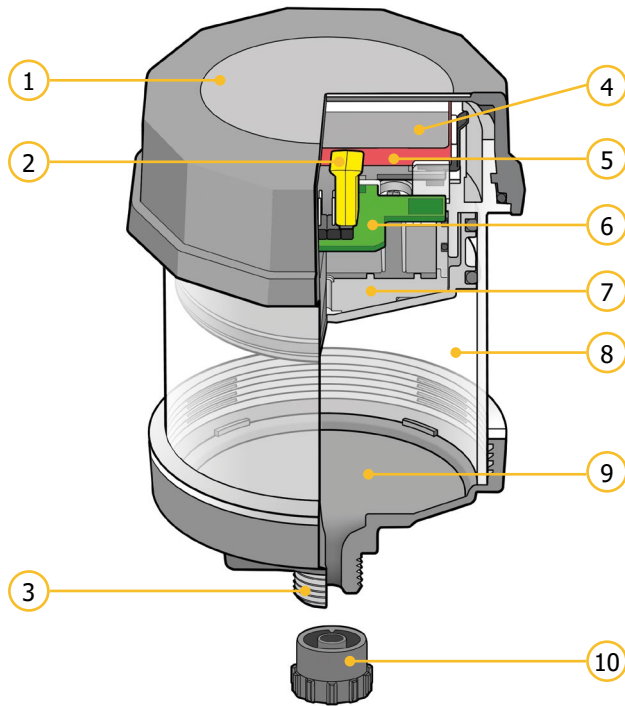
You Tube
video tutorials



CLICK



1. Product details

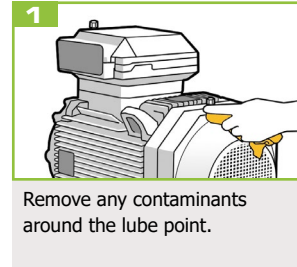


No.	Description	No.	Description
1	Housing cap	6	Printed circuit board
2	Mode selector	7	Piston
3	Thread 1/4" male	8	Lubricant reservoir
4	Battery cover	9	Funnel
5	Battery	10	Plug

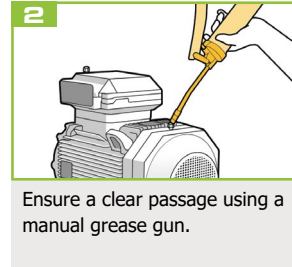
WARNING

- Potential electrostatic charging hazard. Clean with damp cloth only.
- Do not change, replace or charge battery cells.
- Temp. code T4 : $-25\text{ }^{\circ}\text{C} \leq \text{TA} \leq +55\text{ }^{\circ}\text{C}$
- Substitution of components may impair intrinsic safety
- If ignitable gases are present, only touch with an isolating object or while wearing an electrostatic grounding device.
- To prevent ignition of flammable or combustible atmospheres read, understand and follow the instructions of this user manual.

2. Installation & disposal

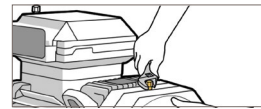


Remove any contaminants around the lube point.

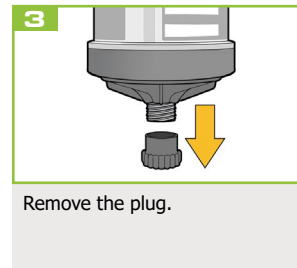
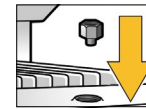
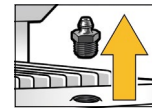


Ensure a clear passage using a manual grease gun.

NOTE The reliable operation depends on completely filled grease lines. Ensure that the grease lines are not blocked. Therefore, grease them before starting the device. Remove any hardened grease by purging the lube point with a manual grease gun. The grease in the equipment and the grease in the unit should be the same or compatible.



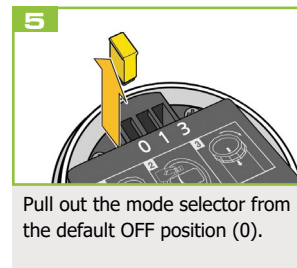
NOTE Remove the grease nipple and install proper connectors.



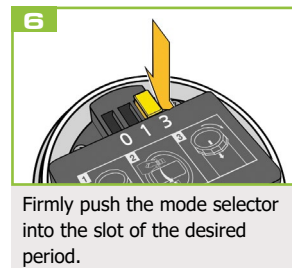
Remove the plug.



Unscrew the housing cap counterclockwise.



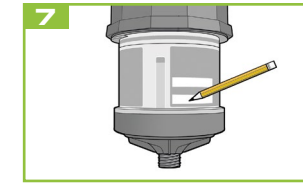
Pull out the mode selector from the default OFF position (0).



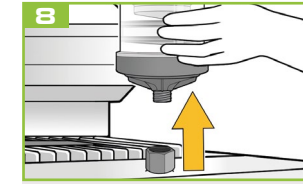
Firmly push the mode selector into the slot of the desired period.

NOTE The lubricator requires a certain start-up time until the lubricant is first dispensed. The start-up time varies in line with the volume dispensed, dispenser size and operating temperature.

NOTE When screwing on the housing cap ensure the sealing ring is fitted correctly.



Note the installation date and the scheduled date of lube cycle completion on the label.

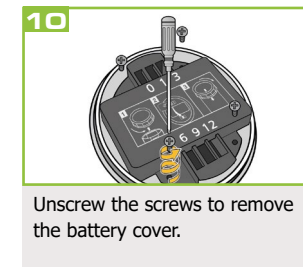


When the selected dispensing period has been completed remove the lubricator from the application.

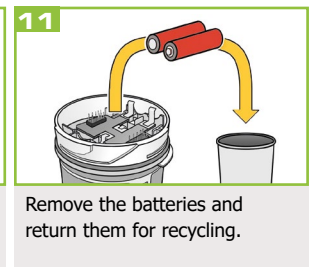


The device is an eco-friendly product that should be disposed of separately.

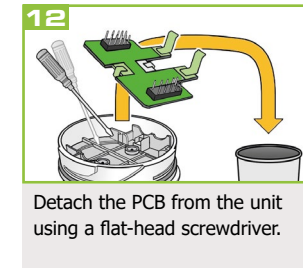
Unscrew the housing cap counterclockwise to disassemble the product for proper disposal.



Unscrew the screws to remove the battery cover.



Remove the batteries and return them for recycling.



Detach the PCB from the unit using a flat-head screwdriver.



Dispose of remaining plastic components according to legal regulations for recycling.

Do not cut, puncture or reuse the lubricator.